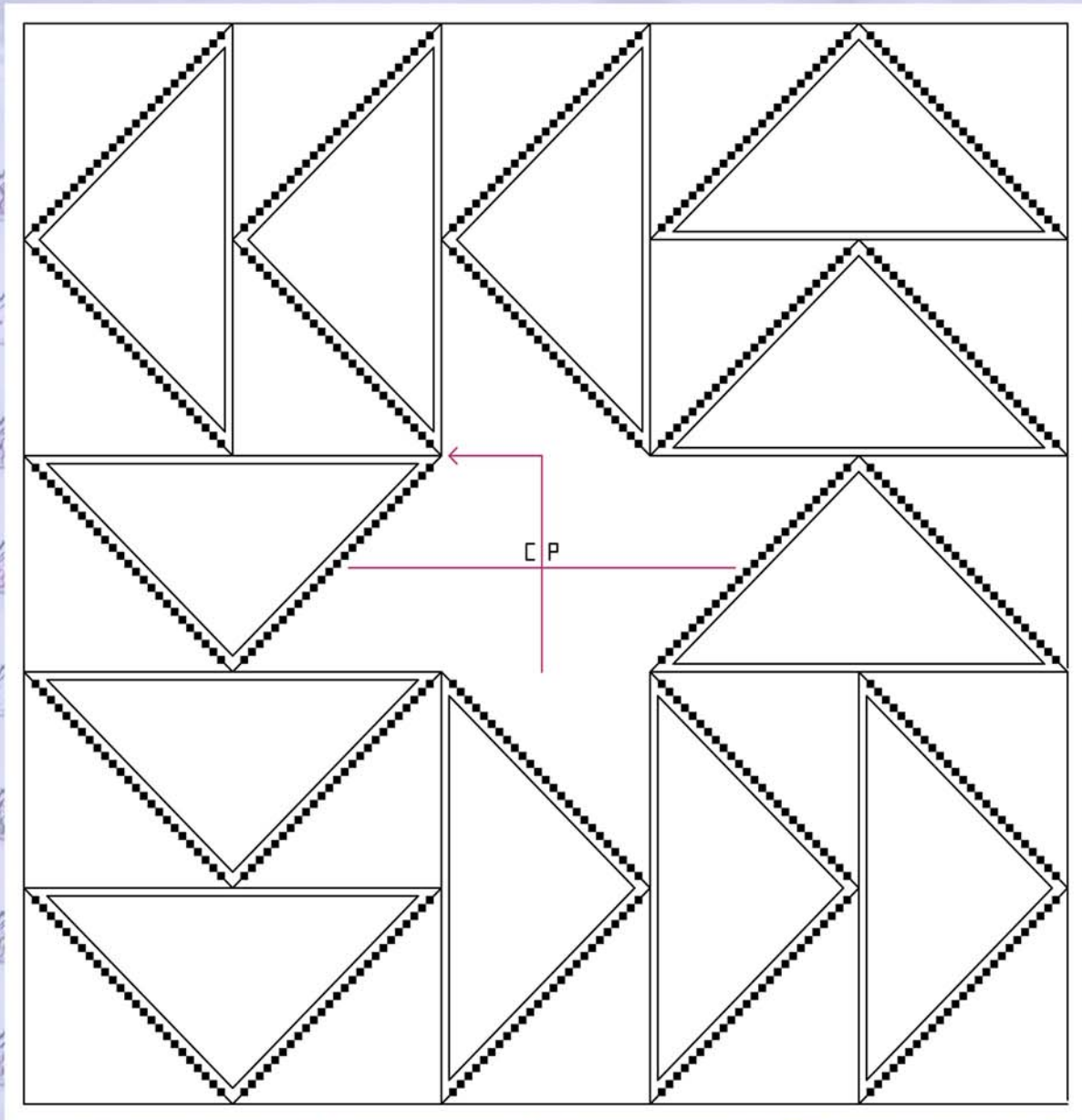


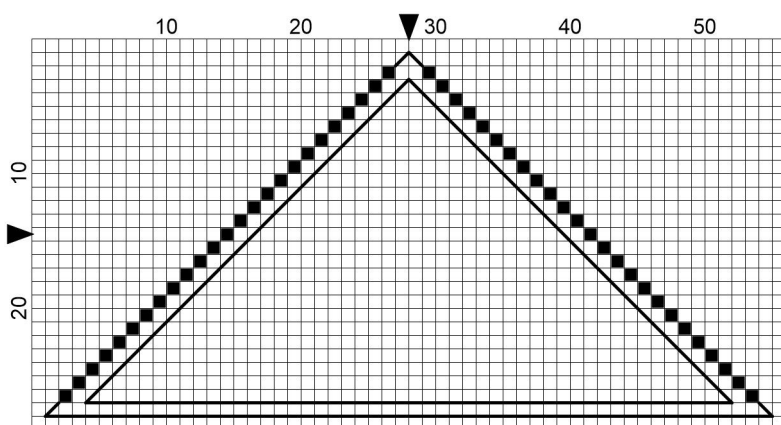
Flying Geese Part 1



6 Part free project
based on
EB0029 Triangle Trail

Flying Geese - Free Project based on EB0029 Triangle Trail from Blackwork Journey

Taken from the new e-book EB0029 Triangle Trail' the twelve triangles are filled with blackwork pattern worked in a cross stitch framework.



Single triangle measures

Design area:

4 inches wide x 2.07 inches high

Stitches: 56w x 29h

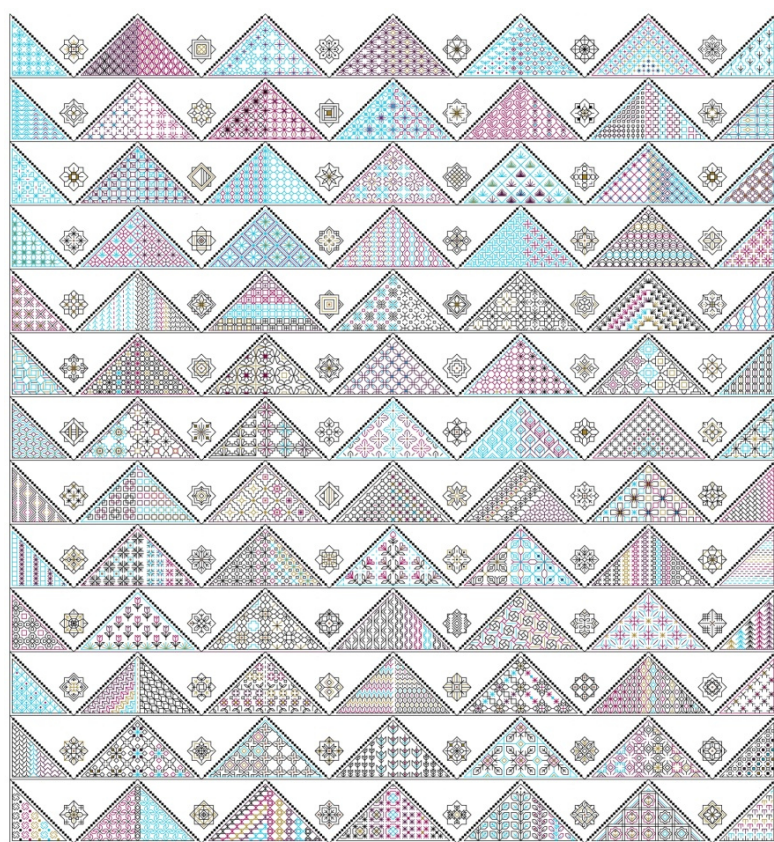
Flying Geese Twelve Block Pattern:

Fabric: Zweigart 28 count evenweave, or Zweigart 14 count Aida, 14 x 14 inches

Design area: 9.64 x 9.64 inches

Stitches: 135 x 135

NB. If Aida blockweave is used there will be some spit blocks.



EB0029 Triangle Trail

There are two charts in Triangle Trail, one is worked in colour and the other is worked in black and gold.

The Master Chart consists of

65 Triangles

26 Quarter Triangles

78 Motifs

Design Area, no border: Zweigart 28 count evenweave 23.14 x 25.07 inches

Design Area, no border:

Zweigart 25 count Lugana

25.75 x 28.50 inches

Stitches: 324 x 351 stitches

Available on the Blackwork Journey website:

www.blackworkjourney.co.uk in e-books

Twelve triangles have been taken from the master chart to make up this free project. After the framework has been completed three patterns a month will be posted. On the Facebook groups and on the website in 'Freebies'.

Materials:

Fabric: Zweigart 28 count evenweave, or Zweigart 14 count Aida, 14 x 14 inches

Thread: DMC stranded floss in colour of choice. Each triangle can be worked in different colours, or one colour with metallic thread and beads to add texture and interest. Choose a dark colour floss, or Cotton P rle No 12 for the framework.

Tapestry needle No.24

Beading needle

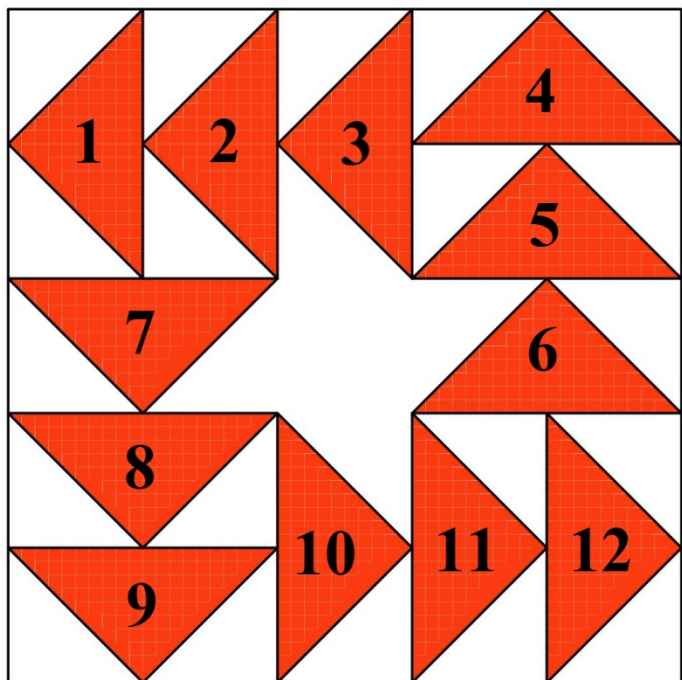
Small embroidery ring

NB. When choosing threads they should be bold enough to show up clearly on the fabric when using ONE strand. If the colour does not make an impact, select an alternative colour!

Cross stitch is worked in TWO strands over two threads, back stitch is worked in ONE strand over two threads unless indicated in the pattern. Cotton P rle No.12 is used as a single thread for cross stitch.

Preparing the fabric:

1. Overlock the edges of the fabric or fold and tack a small hem.
2. Fold the fabric into four quarters to find the centre point. Work a row of tacking stitches vertically and horizontally from the centre point. Count carefully upwards from the centre point to find the bottom right hand corner of Triangle 3.
3. Work the cross stitch and back stitch framework for the triangle. Stitch the rest of the triangles in sequence until all the triangles have been completed.



Layout of the twelve triangles

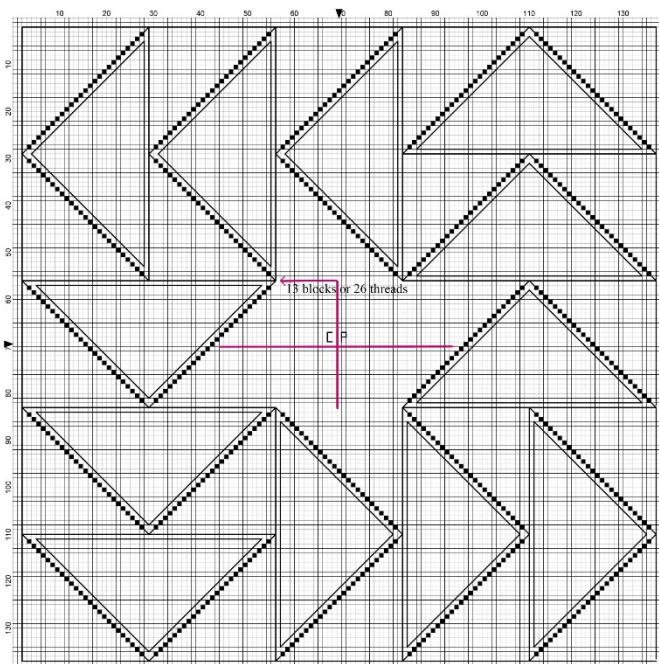
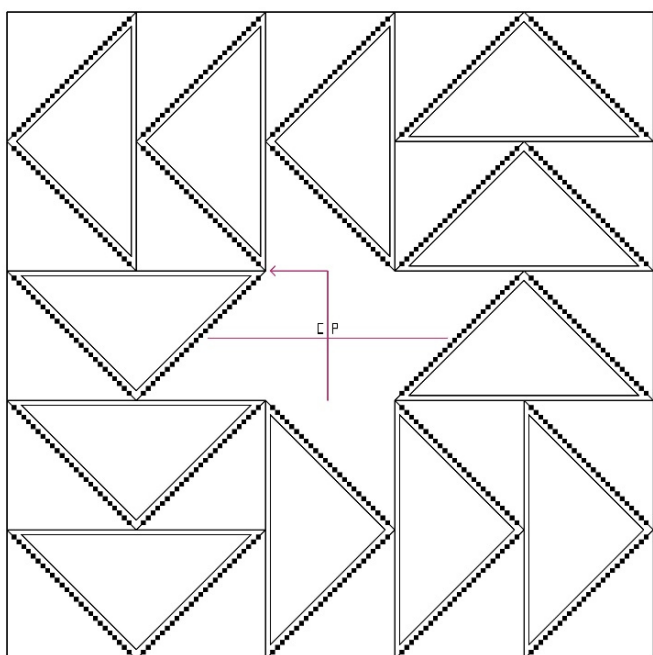
Part 1

Work the framework first for the first three triangle using Cotton P rle No. 12 or two strands of floss in cross stitch and back stitch. Count carefully from the centre point to position the triangles correctly.



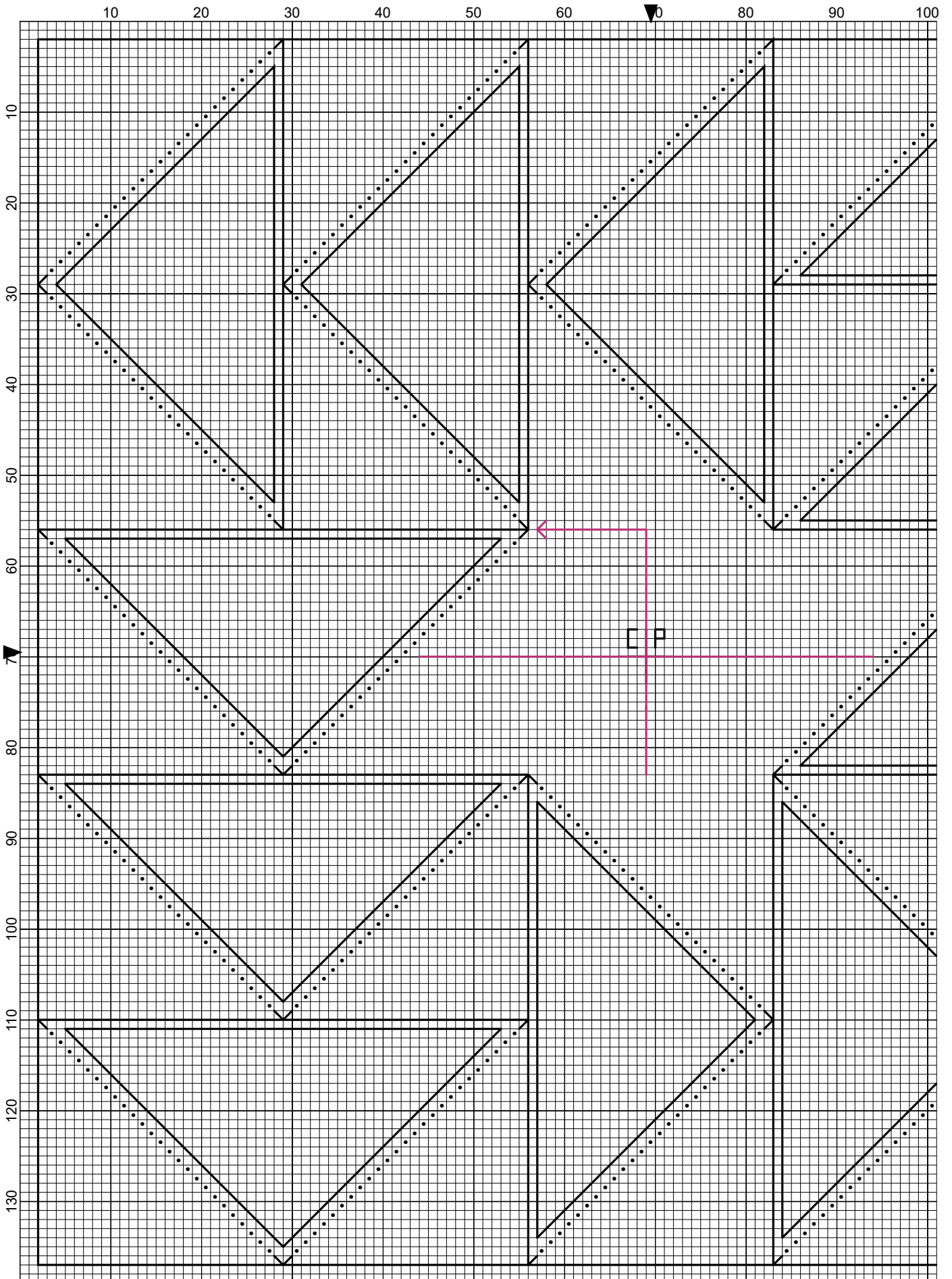
Metallic threads add interest. DMC Light effects or Rainbow Gallery Petite Treasure Braid or thread of choice can be added to filler patterns.

Position the triangles carefully

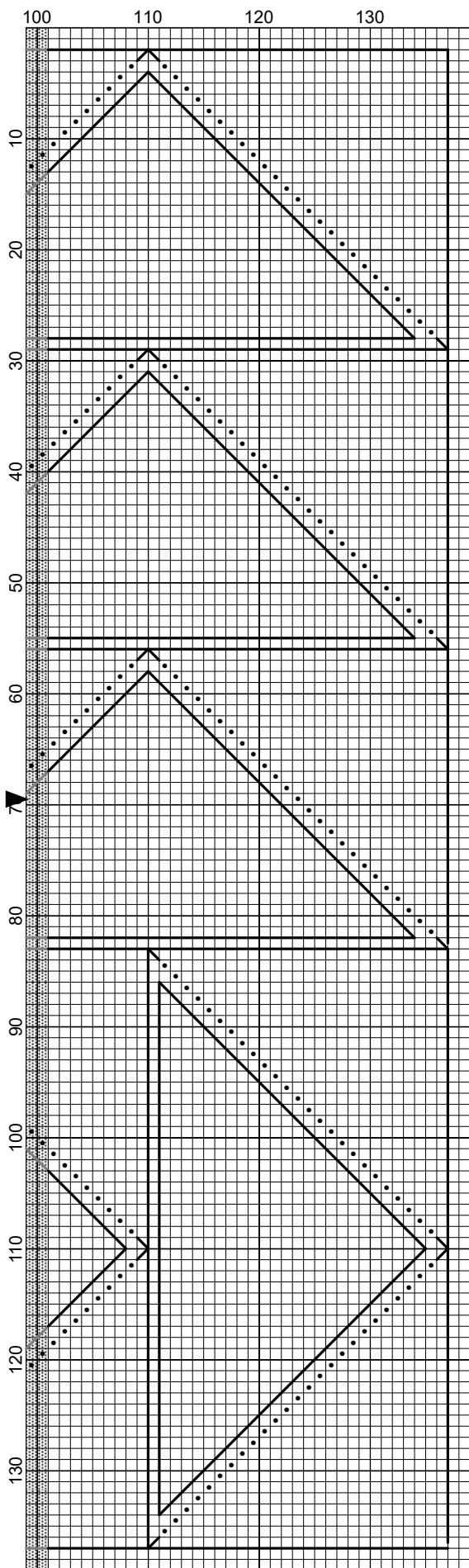


If you have any queries please contact:
lizalmond@blackworkjourney.co.uk

Flying Geese Part 1



Flying Geese Part 1



- Legend:
- ◻ ■ DMC-310
 - Backstitches:
 - DMC-310
 - DMC-718